

## Ph.D. Programme

The PhD programme at IISER Tirupati involves a combination of coursework and teaching assistantship along with major research components. IISER Tirupati admits students to its doctoral programme in Biology, Chemistry, Earth & Climate Sciences, Mathematics, Physics and associated inter-disciplinary areas of research.

Students with a Master's degree in Science / Mathematics or a four-year Bachelor degree with specified criteria are encouraged to apply to the PhD programme. In addition to the qualifying degree, the students should have qualified a national examination such as CSIR-UGC NET/GATE/JEST/JGEEBILS, etc. depending on their area of research interest. Students will be selected to the PhD programme based on their performance in the interviews, which will be conducted after eligible candidates are shortlisted. The interviews typically will be held in two sessions, one during the summer session (May-June), and another during winter (November-December)

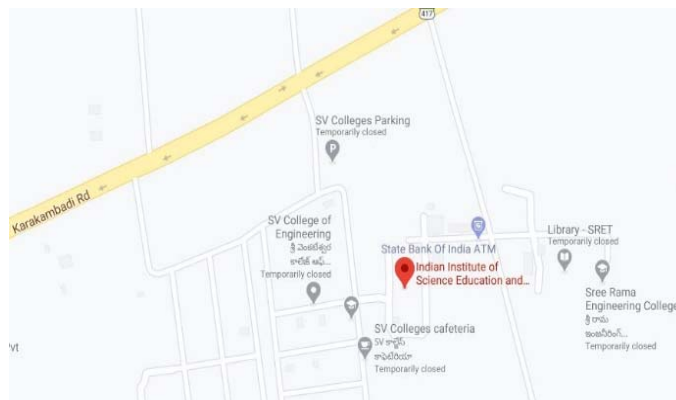
IISER Tirupati provides modern research laboratories and computational facilities as well as excellent hostel/mess facilities for research students. Students will also have the opportunity to participate in a broad range of seminars, meetings and workshops, thereby giving them a chance to interact with scientists from other research organizations within the country and abroad.

## Key Features

- Highly competent and motivated faculty in various disciplines with a passion for science
- Integrated undergraduate teaching with cutting edge research across disciplines
- Upcoming eco-friendly green campus with high-tech infrastructure
- Library with online resources, books, and research journals
- State of the art teaching and research facilities
- Sports and recreational facilities
- Hostel/Mess facility for all students
- Attractive Scholarship Opportunities
- International and national internships/projects

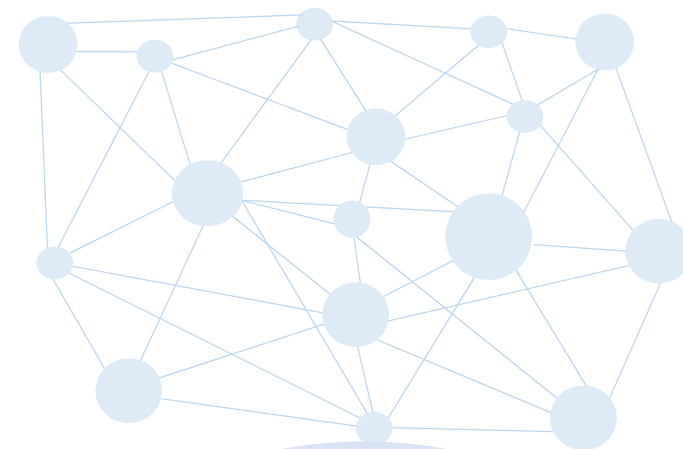


[www.iisertirupati.ac.in](http://www.iisertirupati.ac.in)



Transit Campus

Sree Rama Engineering College, Rami Reddy Nagar,  
Karakambadi road, Mangalam,  
Tirupati-517501, Andhra Pradesh.  
Tel 0877-2500-400/231



भारतीय विज्ञान शिक्षा एवं अनुसंधान संस्थान तिरुपति  
INDIAN INSTITUTE OF SCIENCE EDUCATION AND RESEARCH TIRUPATI

--- Creating infinite possibilities

# Indian Institute of science Education and Research (IISER) Tirupati

--- Creating Infinite Possibilities

IISER Tirupati, established in 2015, in one of the seven IISERs under the Ministry of Human Resource Development, Govt. of India. The other IISERs are established at Berhampur (2016), Bhopal (2009), Kolkata (2006), Mohali (2007), Pune (2006) and Thiruvananthapuram (2009). By an act of Parliament, IISERs have been given the status of institutes of national importance.

The primary goal of setting up IISERs is to provide high quality education in basic sciences by integrating undergraduate teaching and research. Every IISER is an autonomous institute awarding its own degrees. The IISERs are envisaged to have modern, state-of-the-art research laboratories for carrying out world-class research work with relevance to the country.

The Government of Andhra Pradesh allotted about 100 hectares of land adjacent to Srinivasapuram, Pangur and Chindepalli villages of Yerpedu Mandal near Tirupati, where the construction of the permanent campus of IISER Tirupati is started..

IISER Tirupati is currently operating from a transit campus at Sree Rama Engineering College in Tirupati, the transit campus has a 1 lakh sq. ft. building.



## »» Courses

### BS-MS Dual Degree Program

It is the flagship programme of the IISERs. The BS-MS programme is for a duration of five years, intended for bright and motivated science students who have passed (10+2) level. The programme integrates classroom learning with research and provides ample scope for multidisciplinary interactions.

A student who has passed the 10+2 or the equivalent intermediate examinations may apply to the five-year BS-MS programs in all the IISERs. Admission to all the IISERs is centralized and is through following three channels.

**KVPY** - Candidates having a valid KVPY fellowship under SA, SB, and SX category are eligible to apply for admissions. Additional cut-off criteria for marks obtained in 10+2 board examination are also applicable.

**IIT-JEE** - Candidates securing a rank within the limit prescribed by the Joint Admissions Committee (JAC) for that particular year, are eligible to apply. Additional cut-off criteria for marks obtained in 10+2 board examination are also applicable.

**SCB** - Candidates who have passed the 10+2 level board examinations and have obtained the cut-off marks specified for their board are eligible to apply. Students applying through SCB channel will have to appear in the computer-based IISER Aptitude Test (IAT) which will be conducted at various centres across the country. The cut-off marks for various boards each year are provided in the admissions website ([www.iiseradmission.in](http://www.iiseradmission.in)).

*The first batch of students, who joined BS MS program in 2015, graduated in May 2020.*

### Integrated Ph.D. (IPh.D.) Programme

The integrated Ph.D. (IPh.D.) programme at IISER Tirupati is aimed at highly motivated students who wish to pursue a career in scientific research. Students with an excellent academic record can apply for the IPh.D. programme on having completed a bachelor 's degree in any branch of science and qualified in any of the tests like JGEEBILS(Biology), JAM (in respective subjects) NBHM (Mathematics) and JEST (Physics). Students will be selected to the IPhD programme based on their performance in the interviews, which will be conducted after eligible candidates are shortlisted.

IISER Tirupati offers IPhD as a research programme that combines curricula for master's and doctoral degrees into a single integrated programme blending together course work and research projects. On successful completion of the doctoral research project, students are awarded a degree as Master of Science and a degree as Ph.D. The first four semesters consist of core courses, elective courses and advanced courses specializing in one subject, and combined with research work as projects. On successful completion of course work, related project work and a comprehensive exam, the student continues with research leading to Ph.D.

## »» Master Plan of IISERT Campus

